



LEAR Corporation Sweden

Implementation Guideline AVIEXP (version 3)

Contents

1. General	3
2. Basic function of the message	3
3. Creation of a despatch advice.....	3
4. Examples of application	4
5. AVIEXP despatch advice.....	5

1. General

This document describes Lear Sweden's application of ODETTE message for despatch advice (AVIEXP).

The specification offers a description of those data elements, which will be used.

The basis of this application is the ODETTE message entitled AVIEXP version 3.

2. Basic function of the message

The purpose of the despatch advice is to provide the final consignee of the goods, with detailed information relating to the actual contents of a consignment sent by a consignor.

The message is based upon the definition of a consignment as a specified amount of goods, sent by a specified consignor to a specified consignee on a specific occasion.

Notification is to be given of deliveries to all Lear Sweden units.

3. Creation of a despatch advice

An AVIEXP shall state the actual contents of a shipment.

Notification must therefore not be made until the actual loading procedure is completed, and no later than one hour after the goods have been despatched.

The consignor is free to let consignment consist of one or several articles.

In the event that the quantity of goods defined in a particular consignment is too large to be accommodated in its entirety on one vehicle/trailer/container etc. It is necessary to redefine the consignment so it relates only to the vehicle/trailer/container etc. on which it is being transported.

4. Examples of application

Example simplified handling unit (S). Consists of one package, which is a handling unit at the same time.

On September 6th, Lear's supplier SUPP1 has one outgoing delivery of a product with article number 12345678, to be delivered to Lear, Plant LEA070 Trollhattan.

The products are packed in packages of 128 on an L-pallet with four frames and a lid.

Carrier SCHENKER makes delivery to Lear directly to the specified delivery address.

With the current syntax rules and in accordance with Lear's specification, the notification is as follows:

UNH+00001+AVIEXP:3::OD'	*Message header
MID+123456+070906:1219'	Document number, date and time.
CDT+:::~::~SUPP1'	Supplier id assigned by Lear.
SDT+:::~::~SUPP2'	Used if Seller and consignor has different supplier id assigned by Lear. The Supplier Id used in CDT is normally used in the SDT segment.
CSG+:::~::~LEA070+100+LAGER1'	Lear plant id. Assigned by Lear. Final delivery point and additional destination
DTR+++~::~: SCHENKER+ '	Carrier code.
ARD+12345678+256:PCE+490014+SE'	Article number, total quantity, unit, order number and origin.
TCO+:NIL+2+128:PCE'	Package reference number, number of packages, number of articles in one package and unit.
NCO++S123:S124'	Shipping marks.
UNT+10+00001'	*Service segment

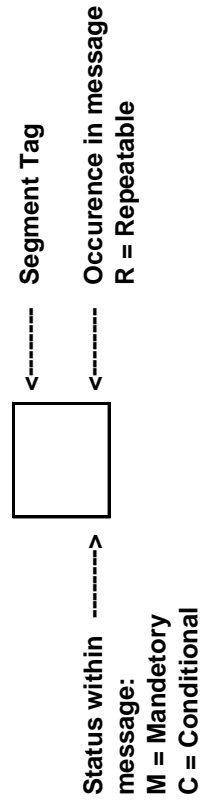
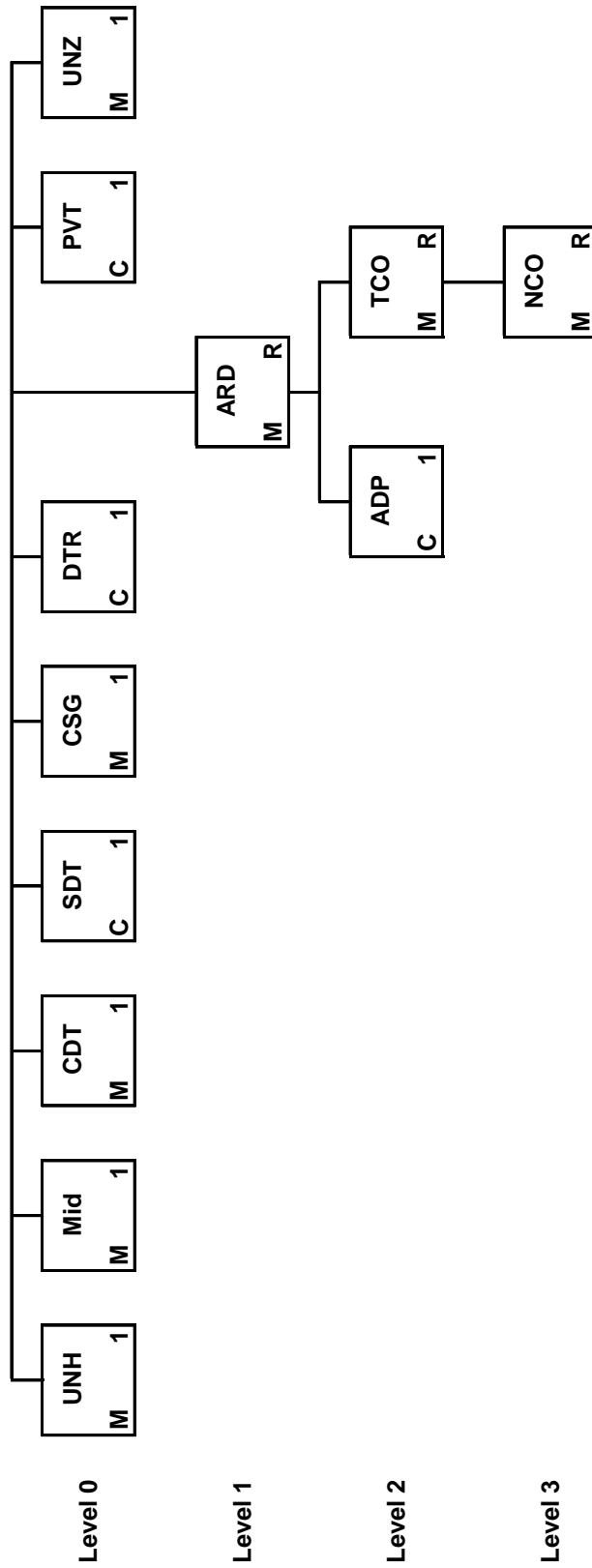
5. AVIEXP Despatch Advise

Introduction:

The Despatch Advice Message is sent by the consignor and is intended to advise the consignee of the despatch of goods and of the detailed contents of the consignment.

Heading Section:

Page No.	Seg. ID	Name	Base Status	User Status	Max. Use	Group Repeat
7	UNH	Message Header	M	M	1	
8	MID	Message Identification	M	M	1	
9	CDT	Consignor Details	M	M	1	
10	SDT	Seller Details	C		1	
11	CSG	Consignee Details	M	M	1	
12	DTR	Data on Transport	C	R	1	
Segment Group 1: ARD-ADP-Segment Group 2			M	M		>1
14	ARD	Article Details	M	M	1	
15	ADP	Line Item Specific Data	C		1	
Segment Group 2: TCO- Segment Group 3			C	R		>1
17	TCO	Type of Package	M	M	1	
Segment Group 3: NCO			C	R		>1
19	NCO	Package Identification Numbers	M	M	1	
20	PVT	Weight and Volume Totals	C		1	
21	UNT	Message Trailer	M	M	1	



Segment: UNH Message Header
Group:
Level: 0
Usage: Mandatory
Max Use: 1
Purpose: To head, identify and specify a message.
Comments:
Notes: Example: UNH+0001+AVIEXP:3::OD

Data Element Summary

Data Element	Component Element	Name	Base Attributes	Lear Attributes
	0062	MESSAGE REFERENCE NUMBER Unique message reference assigned by the sender. Must be unique in conjunction with 0020 values in UNB. The reference number assigned should be unique not only within a single interchange but across many interchanges from the same sender for a sufficient time to avoid any confusion.	M an..14	M
S009		MESSAGE IDENTIFIER Identification of the type, version etc. of the message being interchanged.	M	M
	0065	Message type identifier Code identifying a type of message and assigned by its controlling agency. Refer to individual ODETTE message specifications.	M an..14	M an..6
	0052	Message Version Number Version number of a message type.	M n..3	M
	0051	Controlling Agency Code identifying the agency controlling the specification, maintenance and publication of the message type. Use OD for ODETTE. OD Odette	C an..2	

Segment: **MID** Message Identification
Group:
Level: 0
Usage: Mandatory
Max Use: 1
Purpose: Segment which must contain the unique reference number of the basic data message and the date/time of its generation. If there is concern about the validity of the message, a mutually agreed system of authentication may be implemented by the use of tag 4426.
Comments:
Notes: Example: MID+113776+070906:1219'

Data Element Summary

Data Element	Component Element	Name	Base Attributes	Lear Attributes
	1004	DOCUMENT NUMBER Reference number assigned to the document by the issuer. Unique number for the Despatch Advice (AVIEXP). The number must correspond to the Despatch Note number. The number must not be repeated in one year. Remark: Some recipients may have restrictions on the data format. Please note: This data element is also used in the ODETTE label. Restrictions might occur in the data length. The number must be without leading zero's or spaces.	M an..17	M
	2007	DOCUMENT DATE AND TIME M M Document Date, coded Date when the document is issued and - when appropriate -signed or otherwise authenticated. Format YYMMDD.	M n6	M
	2002	Time Time of the day based on the 24 hours timekeeping system. Format HHMM.	C n4	

Segment: **CDT** Consignor Details

Group:

Level: 0

Usage: Mandatory

Max Use: 1

Purpose: Segment which gives details of the consignor. Identification code must be included and various departmental and contact details may also be given for future reference.

Comments:

Notes: Example: CDT+:::07560'

Data Element Summary

Data Element	Component Element	Name	Base Attributes	Lear Attributes
		CONSIGNOR	M	M
	3296	Internal Identification Number allocated to a Trading Partner Internal Identification Number allocated to a Trading Partner.	C an..17	M an5

Segment: **SDT** Seller Details
Group:
Level: 0
Usage: Conditional (Optional)
Max Use: 1
Purpose: Segment which gives details of the seller. Identification code must be included.
Comments:
Notes: This segment is required when the consignor and the seller have been allocated different supplier numbers. The Supplier Id used in CDT is normally used in the SDT segment.
Example: SDT+:::07652

Data Element Summary

Data Element	Component Element	Name	Base Attributes	Lear Attributes
		SELLER	M	M
	3296	Internal Identification Number allocated to a Trading Partner Internal Identification Number allocated to a Trading Partner.	C an..17	M

Segment: **CSG** Consignee Details
Group:
Level: 0
Usage: Mandatory
Max Use: 1
Purpose: Segment which provides details of the final consignee. Note that this is not necessarily the party taking delivery of the goods (e.g. where the goods are to be held by a grouping centre or third party warehouse). Identification code must be included. For further details about the identification of delivery locations see the general Odette Introduction to Messages.
Comments:
Notes: Example: CSG+:::LEA070+100+LAGER1'

Data Element Summary

Data Element	Component Element	Name	Base Attributes	Lear Attributes
		CONSIGNEE	M	M
	3296	Internal Identification Number allocated to a Trading Partner Internal Identification Number allocated to a Trading Partner. Lear's plant or warehouse number. LEA070 Assembly Plant, Trollhattan LEA080 Assembly Plant, Torslanda	C an..17	M an6
		FINAL DELIVERY POINT	C	C
	3921	Final Delivery Point, coded Detailed location within a place of delivery where goods should be unloaded.	C an..17	
		ADDITIONAL DESTINATION DETAILS	C	C
	3923	Additional Destination Details, coded Additional detailed information on the location within an organizational entity where goods should be unloaded. This value shall be printed on the transport label in the field "Dock/Gate" The value shall be taken from DELINS CSG3923. Note that the value can change and must always be obtained from the DELINS.	C an..17	C

Segment: **DTR** Data on Transport
Group:
Level: 0
Usage: Conditional (Required)
Max Use: 1
Purpose: Used to give details of the means of transport, places of loading etc. Only Carrier Details (3127/3036/3124/3296); Carriage Payment Instructions (4351) and Place of Loading (3335/3334) must be included in this segment.
Comments:
Notes: Example: DTR+++:::EWALS'

Data Element Summary

Data Element	Component Element	Name	Base Attributes	Lear Attributes
	8212	IDENTIFICATION OF THE MEANS OF TRANSPORT Name or number identifying a vessel or a vehicle, flight number and date, etc. Used only after special agreement.	C an..17	
	8164	CONSIGNMENT GROUP NUMBER Trailer Number Registered number of road vehicle trailer. Used only after special agreement.	C C an..17	
	8028	Conveyance Reference Number Unique reference given by the carrier to a certain journey or departure of a means of transport (generic term). Used only after special agreement.	C an..17	
	3296	CARRIER Internal Identification Number allocated to a Trading Partner Internal Identification Number allocated to a Trading Partner. Code for actual carrier. If the Code is not known, insert NIL	M C an..17	M M
	1188	TRANSPORT DOCUMENT NUMBER Reference assigned by the carrier or his agent to the transport document.	C an..17	

Group: **ARD** Segment Group 1
Group:
Level: 1
Usage: Mandatory
Max Use: >1

Segment Summary

	Pos. Group: No.	Seg. ID	Name	Req. Des.	Max. Use	Repeat
M	110	ARD	Article Details	M	1	
	120	ADP	Line Item Specific Data	C	1	
			Segment Group 2	C		>1

Segment: **ARD** **Article Details**

Group: Segment Group 1 Mandatory

Level: 1

Usage: Mandatory

Max Use: 1

Purpose: Segment which identifies an article. The buyer's article number and the order/contract authorizing delivery must be given. Three lines of free text may be used but careful consideration should be given before doing so. (See FTX segment below).
 If for one delivery instruction an article is related to two different orders, two occurrences of the ARD segment are required: one for each order number. If one article is to be delivered under two different technical statuses, then two different ARD segments are required.
 All segments below the Article Details segment relate to the article specified in the preceding ARD segment and may all appear at least once before the ARD segment is repeated to give details of another article.

Comments:

Notes: Example: ARD+1234567+256+49001+SE'

Data Element Summary

Data Element	Component Element	Name	Base Attributes	Lear Attributes
		ARTICLE IDENTIFICATION	M	M
	7304	Buyer's Article Number Buyer's reference identifying articles or products. Lear's part number. Must be given without leading zeroes or space.	C an..35	M
		QUANTITY AND UNIT	M	M
	6270	Quantity Delivered Quantity delivered by the seller on which the article item amount is calculated. The quantity must correspond to the total sum of packed quantity, which will be indicated in the subordinate TCO segment.	M n..10	M
		Measure Unit Specifier	C an..3	
		Indication of the unit of measurement in which weight (mass), capacity, length, area, volume or other quantity is expressed. PCE Piece, Each, Single		
		ORDER OR CONTRACT IDENTIFICATION	M M	
	1022	Order Number Reference number assigned by the buyer to an order. Can be obtained from the DELINS message.	M an..17	M
		COUNTRY OF ORIGIN	C	
	3239	Country of origin, coded Country in which the goods have been produced or manufactured, according to criteria laid down for the purposes of application of the Customs tariff, of quantitative restrictions, or of any other measure related to trade. Codes values according to ISO standard. See appendix number 2.	C an 2	

Segment: **ADP** Line Item Specific Data

Group: Segment Group 1 Mandatory

Level: 2

Usage: Conditional (Optional)

Max Use: 1

Purpose: Can occur once for each ARD segment used, containing information concerning the article detailed in the preceding ARD segment. An article batch number, Delivery Instruction number (as opposed to the order or Contract number in the ARD segment) and a part consignment number (data element 1310) similar to the Delivery Instruction number but uniquely associated with the article, can be given. Because there is a one-to-one relationship with the ARD segment it is necessary to repeat the ARD segment each time there is a change in the content of the corresponding ADP segment. Care should therefore be exercised in the use of ADP.

Comments:

Notes: Used after special agreements

Because there is a one-to-one relationship between the ADP segment and the ARD segment, it is necessary to repeat the ARD segment each time there is a change in the content of the corresponding ADP segment.
Example: ADP++556677'

Data Element Summary

Data Element	Component Element	Name	Base Attributes	Lear Attributes
	7338	ARTICLE BATCH NUMBER Reference number assigned by the manufacturer to designate grouping of product within the same production batch. This data element is used when special traceability is required - Document obligation. Lear Car will provide code values individually to suppliers obtained.	C an..17	C an..17

Group: **TCO** Segment Group 2
Group: Segment Group 1 Mandatory
Level: 2
Usage: Conditional (Required)
Max Use: >1

Segment Summary

	Pos. Group: No.	Seg. ID	Name	Req. Des.	Max. Use	Repeat
M	140	TCO	Type of Package Segment Group 3	M C	1	>1

Segment: **TCO** Type of Package
Group: Segment Group 2 Conditional (Required)
Level: 2
Usage: Mandatory
Max Use: 1
Purpose: Segment which contains data specifying the packaging requirements for the consignee.

Comments:

Notes: The TCO segment shall be repeated for every NCO when:
 An article number, shown in the preceding ARD segment, is packed in different type of packages.
 A package contains an odd quantity which differs from standard or recommended quantity.
 M-or G package are used.
 S package: TCO+:NIL+2+128:PCE'

 M package: TCO+:NIL+16+56:PCE'

 G package: TCO+:NIL+8+56:PCE'
 G package: TCO+:NIL+8+56:PCE'

Data Element Summary

Data Element	Component Element	Name	Base Attributes	Lear Attributes
		PACKAGE DATA	M	M
	7064	Type of Packages Description of the form in which goods are presented. Used for contract packaging.	C an..35	
	1906	Package Reference Number Reference number of a package. If no information have been given by Lear's logistic provider, insert NIL.	C an..35	M
	7224	NUMBER OF PACKAGES Number of individual parts of a shipment either unpacked, or packed in such a way that they cannot be divided without first undoing the packing. Number of packages = numbers of S-labeled units. (standard pallets or small boxes.) Empty packages shall not be included.	M n..6	M
	6853	QUANTITY Quantity of Articles in Package Number of articles in a given package. If the number of packages differs, the TCO-NCO segments should be repeated. The sum of packed quantity given here, shall correspond to the quantity delivered indicated in the ARD segment tag 6270 = number of S labeled units (7224) * packed quantity of S labeled units (6853)	C M n..10	M M
	6410	Measure Unit Specifier Indication of the unit of measurement in which weight (mass), capacity, length, area, volume or other quantity is expressed. PCE Piece, Each, Single	C an..3	

Group: **NCO** Segment Group 3
Group: Segment Group 2 Conditional (Required)
Level: 3
Usage: Conditional (Required)
Max Use: >1

Segment Summary

	Pos. Group: No.	Seg. ID	Name	Req. Des.	Max. Use	Repeat
M	150	NCO	Package Identification Numbers	M	1	

Segment: **NCO** **Package Identification Numbers**
Group: Segment Group 3 Conditional (Required)
Level:
Usage: Mandatory
Max Use: 1
Purpose: Segment which contains the label number(s) of all or part of the packages to be despatched. (This number is used to identify the packages to be delivered as the order may vary depending on engineering changes, expiry dates etc.) If a list of the packages contained in a simple or mixed Handling Unit is required, all the Packaging Unit numbers must be included in this segment (data element 7102).
 If used, data element 2837 Date of Production applies to all products contained in packages having label numbers given with the NCO segment (data element 7102).

Comments:

Notes: Standard pallets
 Goods labeling = S + unique shipping marks.
 The standard pallet is a simple handling unit, containing a fixed quantity of ONE article number.
 Homogenous load
 Goods labeling = M + unique shipping marks.
 A homogenous load contains a number of small boxes with the same article number. Each small box is individual labeled = S + unique number
 Mixed loads
 Goods labeling = G + unique shipping marks.
 The mixed load is a handling unit containing a number of different article numbers packed in one or more small box(es). Each small box is individual labeled = S + unique number.

S-package: NCO++S123:S124'
 M-Package: NCO+M191+S11:S12:S13:S14:S15:S16:S17:S18:S19:S20:S21:S22:S23:S24:S25:S26'
 G package: NCO+G123+S110:S111:S112:S113:S114:S115:S116:S117'
 NCO+G123+S118:S119:S120:S121:S122:S123:S124:S125'

Data Element Summary

Data Element	Component Element	Name	Base Attributes	Lear Attributes
	7246	TRANSPORT LABEL NUMBER Number allocated to a label which is used to identify a group of sub-labels within a consignment or major package. Used only for Homogeneous (M) or Mixed (G) package. The Transport Label Number must begin with a M or G and be followed by a numeric value, without leading zeroes or spaces.	C an..17	C an..17
		MARKS AND NUMBERS The Shipping Marks must begin with a S and be followed by a numeric value, without leading zeroes or spaces.	C	
	7102	Shipping Marks Marks and numbers identifying individual packages.	C an..17	M an..10
	7102	Shipping Marks Marks and numbers identifying individual packages.	C an..17	M an..10
	7102	Shipping Marks Marks and numbers identifying individual packages.	C an..17	M an..10
	7102	Shipping Marks Marks and numbers identifying individual packages.	C an..17	M an..10
	7102	Shipping Marks Marks and numbers identifying individual packages.	C an..17	M an..10

Segment: **PVT** Weight and Volume Totals
Group:
Level: 0
Usage: Conditional (Optional)
Max Use: 1
Purpose: Segment which contains the total weight and cube of the consignment(s).
Comments:
Notes: The weight and volume quoted here must match the information on the consignment note and, wherever applicable, the delivery note/invoice.
 Example: PVT+720++1.94'

Data Element Summary

Data Element	Component Element	Name	Base Attributes	Lear Attributes
		WEIGHT	M	M
	6012	Consignment Gross Weight Total gross weight (mass) of all goods items referred to as one consignment. This weight can be obtained by adding together the gross weights of all the parcels in the consignment, including empty filler units.	M n..12	M
		CUBE	C	
	6422	Consignment Cube Total cube of all goods items referred to as one consignment. This volume can be obtained by adding together the volumes of all the parcels in the consignment, including empty filler units. An amount having a decimal separator, must have at least one digit before and after the separator. Ending zeroes should be omitted. I.e. 15.000 is indicated 15 15.0 or 15,0 15.500 is indicated 15.5 or 15,5 5.550 is indicated 15.55 or 15,55 15.555 is indicated 15.555 or 15,555 Volume information for the most common standard packaging will be found in Appendix 5.	M n..9	M

Segment: **UNT** Message Trailer
Group:
Level: 0
Usage: Mandatory
Max Use: 1
Purpose: Message Trailer
Comments:

Data Element Summary

Data Element	Component Element	Name	Base Attributes	Lear Attributes
	0074	NUMBER OF SEGMENTS IN A MESSAGE Control count of number of segments in a message The count shall include the message header segment (UNH) and the message trailer segment (UNT).	M n..6	M
	0062	MESSAGE REFERENCE NUMBER Unique message reference assigned by the sender. Must be unique in conjunction with 0020 values in UNB. The reference number assigned should be unique not only within a single interchange but across many interchanges from the same sender for a sufficient time to avoid any confusion.	M an..14	M